

# Fontainbleau® Stone

## Technical Data

	ASTM	Fontainbleau®	Standard Specification*
Absorption	ASTM C-97	0.05% by weight	0.4% by weight
Compressive Strength	ASTM C-170	Dry 242 MPa Wet 242 MPa	Dry 131 MPa Wet 131 MPa
Density	ASTM C-97	2870 kg/m <sup>3</sup>	2560 kg/m <sup>3</sup>
Flexural Strength	ASTM C-880	Dry 47.4 MPa Wet 48.3MPa	Dry 8.27 MPa Wet 8.27 MPa
Modulus of Rupture	ASTM C-99	Dry 57.5 MPa Wet 61.4 MPa	Dry 10.34 MPa Wet 10.34 MPa
Resistance to Salt Attack	AS/NZS 4456.10	<0.01%	1% <sup>1</sup>

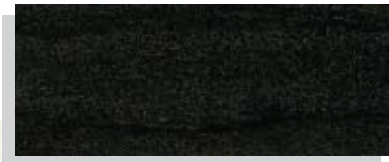
\*ASTM C-615 Standard Specification for Granite Dimension Stone showing for comparison only.  
<sup>1</sup> Not in ASTM C615 but stone <1% weight loss is usually considered suitable for veneer cladding.



### Nefiko Marble

68 O'Riordan Street, Alexandria NSW 2015 Australia  
 tel (+ 61 2) 8338 8668 fax (+61 2) 8338 8822  
 email info@nefiko.com web www.nefiko.com

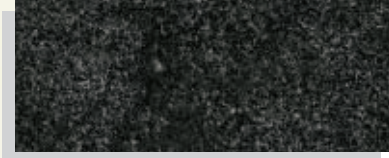
Mon~Sat 7am~5pm



Polished



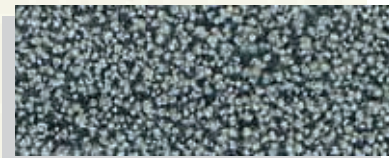
Honed



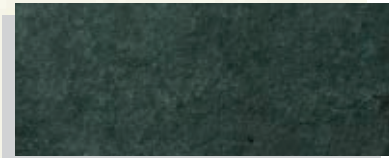
Antiqued



Sandblasted



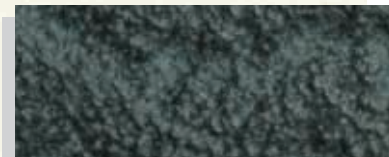
Bush Hammered



Exfoliated



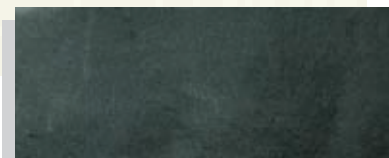
Medium Jet Blasted



Coarse Bush Hammered Antiqued



Coarse Jet Blasted



Split Face

